

bedding support products

LINWOOD® Bed Base

Strong | ideal for contract use

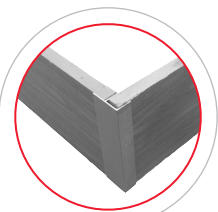
Easy Assembly | corners & crossrails lock into place

Sturdy Construction | 6" or 7-1/2" height fiberboard

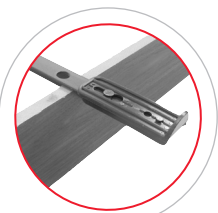
Center Support | properly supports all bedding for longevity

- strong single leg center support on 4/6 and 5/0
- full length head-to-foot fiber board center support with angle iron cross members on 6/6

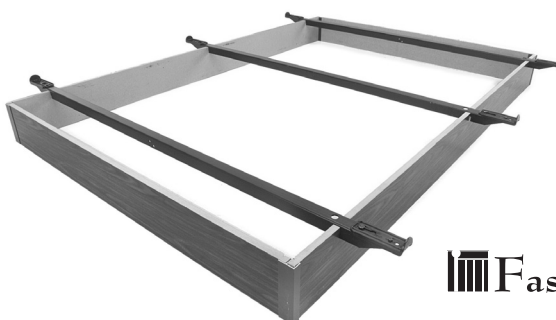
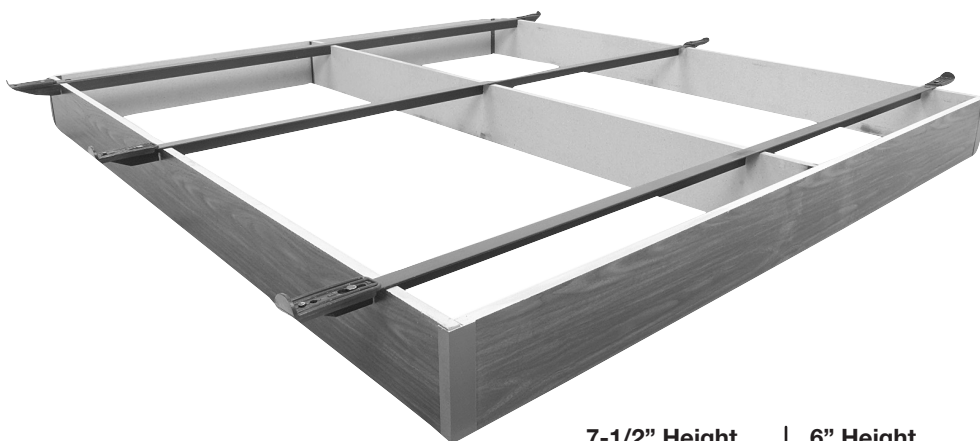
6 1 7 1 2



locking corners | no tools required for assembly



retainer brackets | adjusts to hold boxspring securely in place



7-1/2" Height

CK-19 | 6/0
total wt. | 55 lbs.
(not shown)

K-19 | 6/6
total wt. | 57 lbs.
(shown above)

Q-19 | 5/0
total wt. | 42 lbs.
(shown at left)

F-19 | 4/6, 4/6XL
total wt. | 38 lbs.
(not shown)

T-19 | 3/3, 3/3XL
total wt. | 32 lbs.
(shown below)

6" Height

CK-17 | 6/0
total wt. | 55 lbs.
(not shown)

K-17 | 6/6
total wt. | 57 lbs.
(not shown)

Q-17 | 5/0
total wt. | 42 lbs.
(not shown)

F-17 | 4/6, 4/6XL
total wt. | 38 lbs.
(not shown)

T-17 | 3/3, 3/3XL
total wt. | 32 lbs.
(not shown)